

## CASE STUDY

# BOOHOO STOCK WAREHOUSES

BURNLEY, LANCASHIRE



### PROJECT BRIEF

Surveyors from TruMetric have worked to assist Boohoo and its associated brands across the country for many years.

In this instance TruMetric were approached to assist with the replacement of the internal networking systems, which required a set of plans that would accurately show the positions of every item within the warehouse that could obstruct a wireless network, including walls, structure, furniture, automated product handling, and product storage racking, etc.

In order for the new systems to be designed and installed before the start of peak season, TruMetric were allocated a relatively short window of opportunity to capture all the necessary data from the site, combined with the added difficulty that this all was taking place in the middle of the COVID-19 lockdown & distancing measures across the nation.

Our surveyors reviewed the available resources and determined that the sheer size of the area to be measured, combined with the level of accuracy required for this purpose made the BLK2GO from Leica the ideal measurement solution.



### PROJECT OVERVIEW

**CLIENT**  
BOOHOO

**LOCATION**  
BURNLEY, LANCASHIRE

**MARKET SECTOR**  
RETAIL / WAREHOUSE

**PROJECT SIZE**  
APPROX. 185,000m<sup>2</sup> (2,000,000 sq.ft)



The BLK2GO is a handheld SLAM (Simultaneous Location And Mapping) Lidar device, meaning that it can be operated simply being held by our Surveyor walking around the area without the need to be fixed on a tripod to scan. While other units like our usual RTC360 from Leica would have no difficulty scanning a building of this type, the need to position it in gangways and corridors while the site is in operation (causing an unacceptable obstruction) combined with its longer scan time meant that the much more versatile BLK2GO would allow us to cause as little interruption to the site operations while we were present.

For more information on this project or if you have a similar project that you would like to speak to us about contact:

**PRESTON** 01772 846002  
**MANCHESTER** 0161 533 0915  
**LEEDS** 0113 479 0403

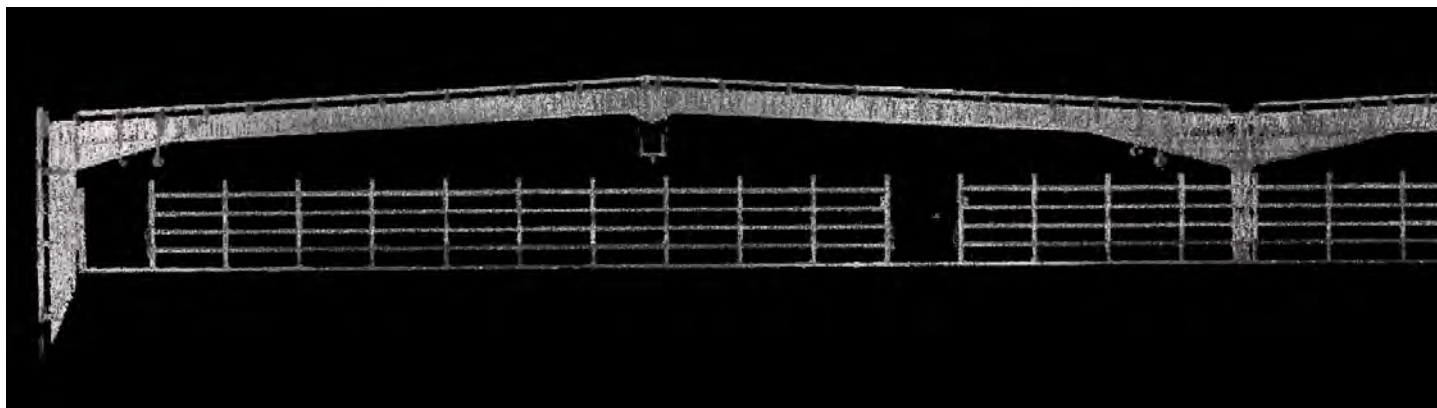
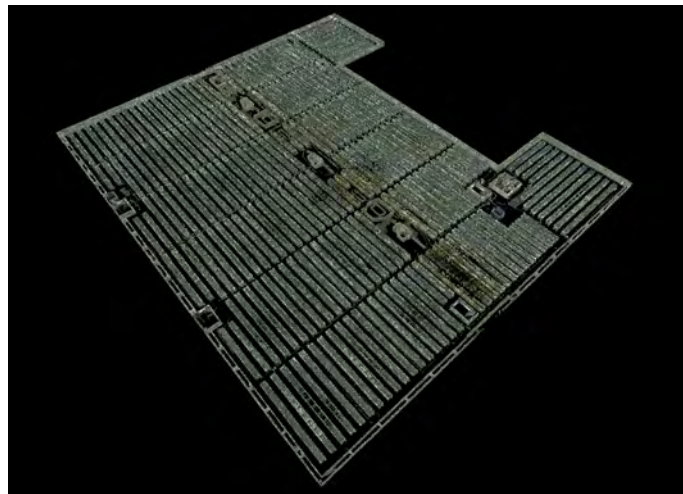
EMAIL: [a.wenmouth@trumetric.co.uk](mailto:a.wenmouth@trumetric.co.uk)



Using the BLK2GO we gradually and thoroughly made our way through each of the floors of each of the buildings covering a total of approximately 2,000,000 sq.ft of area over the course of just over a week.

The data captured during these surveys was collated on site and combined into a series of 3D Point Cloud models that were in turn drawn up into the 2D plans our Client required for the networking designs.

Each of the drawings was prepared with the intention of being a very simple but accurate representation of the layout, including all the fixed items measured, and identifying heights to tops of racking, underside of ducting, structural members, ceilings, and more.



Although not actioned in this case, the data captured from this survey will in future be useful for identifying positions of many other building elements including:

- internal rainwater drainage runs
- air handling routes
- fire suppression pipework positions
- structural sizes & positions
- assessment of available space for reconfiguration

Our surveyors are experienced in undertaking surveys of all kinds of buildings, all over the country, and to any extent.

We will always aim to tailor our services to your needs to reduce interruption, down time, or additional cost to you, while ensuring accuracy, cost efficiency and a thorough detailed service from us.

For more information on this project or if you have a similar project that you would like to speak to us about contact:

PRESTON	01772 846002
MANCHESTER	0161 533 0915
LEEDS	0113 479 0403

EMAIL: [a.wenmouth@trumetric.co.uk](mailto:a.wenmouth@trumetric.co.uk)

